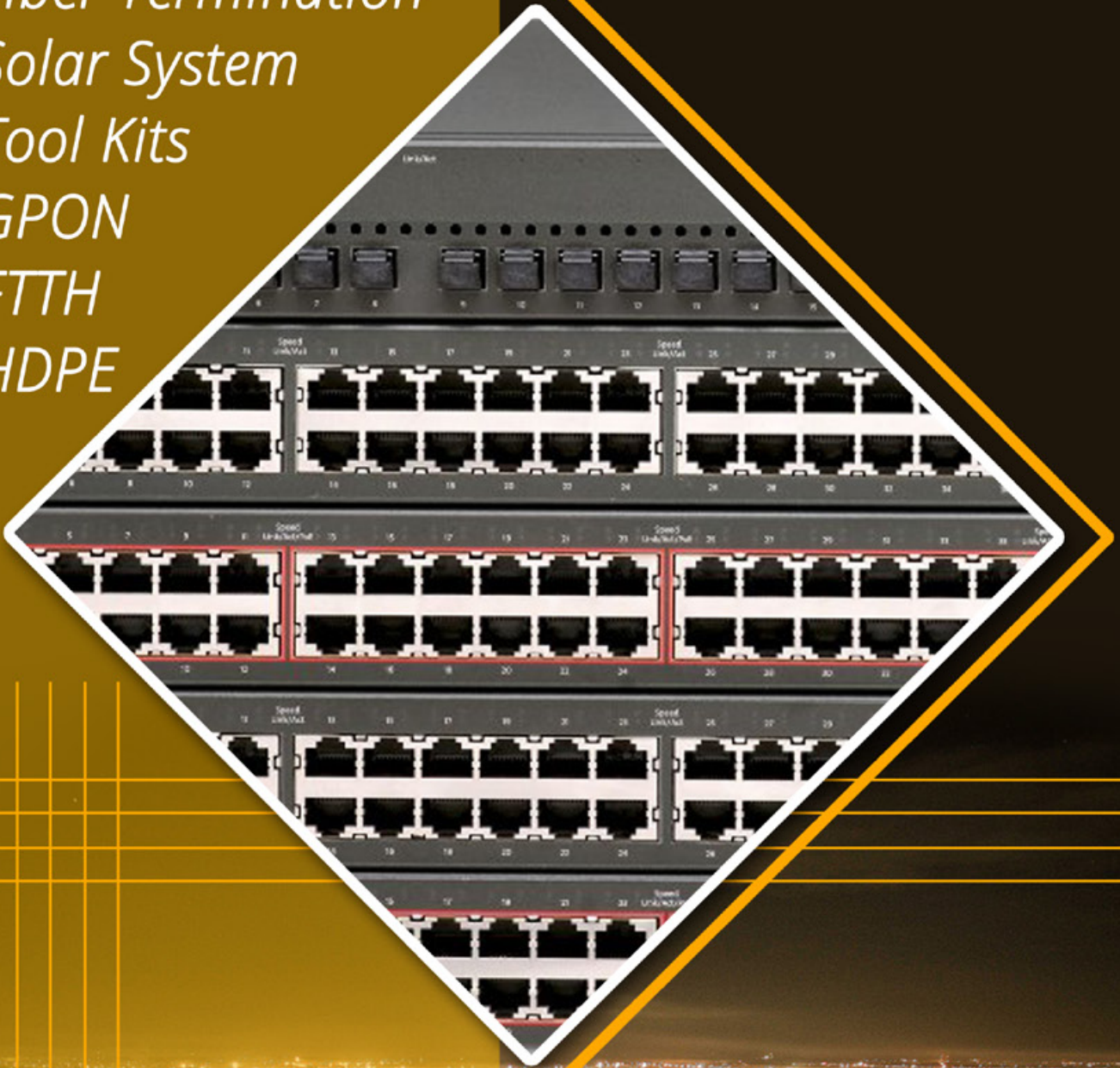


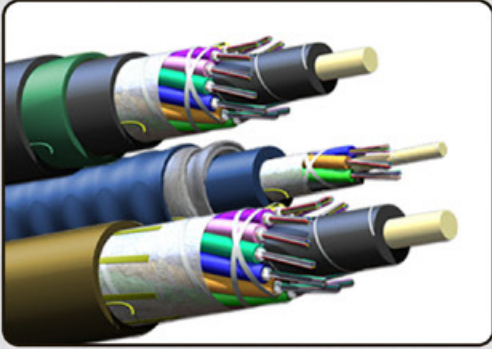
*Splicing Machine
Joint Enclosure
Fiber Optic Cables
Fiber Termination
Solar System
Tool Kits
GPON
FTTH
HDPE*

Aares Telecom (P) LTD

Product Range

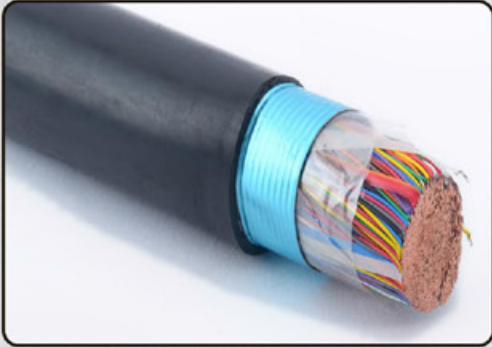


An ISO 9001:2008 Certified Company



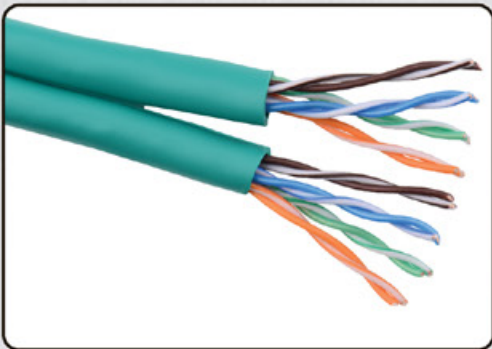
Fiber Optic Cables

OFC are individually coated with plastic layers and contained in a protective tube suitable for the environment where the cable will be deployed, it consists of a core and a cladding layer, selected for total internal reflection due to the difference in the refractive index between the two.



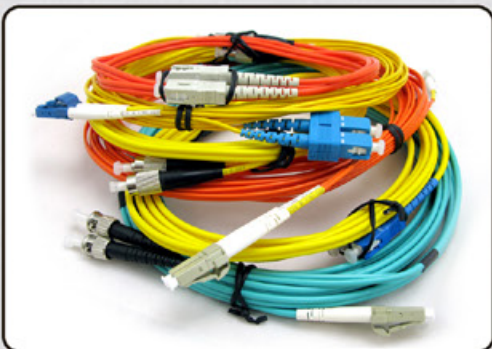
Jfc cable 10pair to 2000 pair

We are extremely engaged in trading and supplying a comprehensive range Jelly Filled Telephone Cable. Widely appreciated in the market for its sturdiness and perfect finish, this product is rigorously tested on various parameters of quality



Cat5,cat6 cable(4 Pair)

Enhanced performance cable for transmission of high speed data, digital and analogue voice and video (RGB) signals on LANs. Supports Gigabit Ethernet (1000 base T) standard. Operates at bandwidth of 100 MHz.



FC.SC,ST,LC,APC,E2000 Patch Cords

Fiber optic patch cords are components to link the equipments and components in fiber optic network. Generally there are two types of fiber optic patch cords: Single Mode fiber optic patch cord and Multi-mode fiber optic patch cord



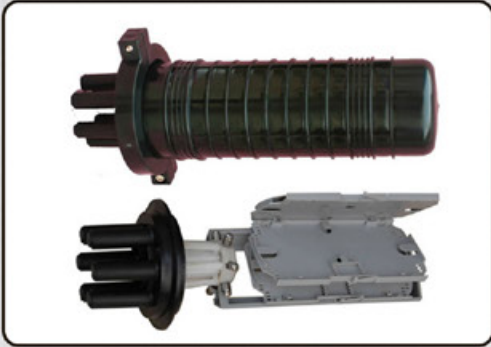
FC.SC,ST,LC,APC,E2000 Pigtails

Pigtail are components to link the equipments and components in fiber optic network. Usually SM fiber optic pigtail is with 9/125μm fiber glass with yellow jacket and MM fiber optic pigtail is with 50/125 or 62.5/125μm fiber glass with orange jacket



Splice protection sleeve (SPS)

The smallest in the industry, this sleeve is designed for use in splitter and coupler packages. It has a steel strength member, inner fiber tube and outer shrink tube. After heat shrinking the size is 1.5mm diameter x25mm length. (Single Fiber and Ribbon fiber)



Joint closure (6F to 288F)

Aares (ATPL1192, ATPL1196) 6 to 288F joint closure has been developed to meet the special needs of fibre optic cable jointing and provides a full proof solution for the Fibre Optic cable jointing and branching applications.



Joint closure (JC TIFIN TYPE)

Aares (ATJC2811, ATJC3611) Closures are open typed and mechanically sealed, which are widely applied in the cable connection. with reference to their structure they can be further classified into Dome Optical Splice Closures and Horizontal Fiber Optical Splice Closures



Jointing kit Raychem

Aares is one of the major power cable jointing kits (Electrical/TSF 1 to 5 Kit) suppliers in India. The cable jointing kits offered by us are sourced from trustworthy vendors ensuring availability of no substitute in the entire market



Rj 45 Patch panel 12/24 Ports

Ethernet/Network patch panel products from Aares include Cat6 patch panel, Cat5 patch panel, Cat5e Ethernet patch panel, and RJ45 patch panel products that are in stock. Our RJ45 patch panel offering includes feed-thru style and 110 punch down style network patch panel options.



FDMS (LIU), ODF 6 to 96 Fiber

Aares Fiber panel is essentially a fiber distribution box wherein the fiber backbone cables and the equipment cables area terminated. The fiber spools provide minimum bending radius and the splice trays function as a splice cover for pigtail splicing.



Termination Box WM/RM 2 to 24 Fiber

AARES provides a variety of cassette or box type splitter products that are connectorized and/or pluggable. They are available in the form of either module cassette, rack-mount or wall-mount box with fiber diameters up to 3 mm.



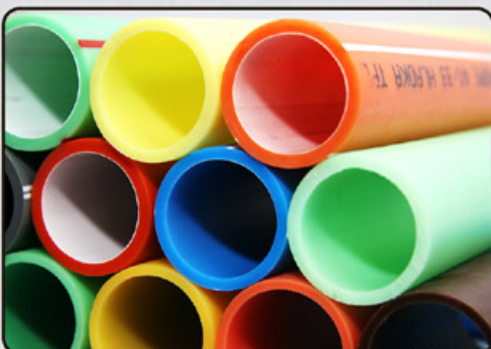
Adopter Sc,lc,fc,st,e2000,mtrj

Fiber optic adapters (couplers) are designed to connect two fiber optic cables together. They come in versions to connect single fibers together (simplex), two fibers together (duplex), to use singlemode adapters to connect multimode cable



Connector Sc,lc,fc,st,e2000,mt

Aares offers a mechanical connector that provides quick and easy assembly in the field. It has the familiar push-pull insertion and release that is known by most craft personnel. Minimum amount of tools required and has an easy to follow installation method.



HDPE duct

Aares is one of the famous suppliers of an extensive array of HDPE Duct & Accessories. Made from high grade polythene materials, these HDPE Duct & Accessories are high in strength and resistant to crush.



Micro Duct 2mm to 14mm

Aares MicroDucts allows you to expand your fiber network as you bring on new customers. It enables you to increase bandwidth as your needs increase, and it allows you to do it easily, without adding extra fibers that might never be used.



HDPE Coupler 40mm/32mm

Aares offering the detachable joints in various specifications, sizes and dimensions. Designed and developed in compliance with different industry quality standards, our range is wide for long working life and resistance to temp. & chemicals.



OFC Tool Kit (Rudra)

Aares is the leading exporters and traders of a wide range of Instruments, Cable Accessories and Tools. (Ceramic Scissor, Fiber stripper, Loose Tube Cutter, Cable sheath cutter, Cable Cutter, Rachit Screw Driver ect.)



Fiber coupler (20:80,50:50,70:30)

Fiber couplers are made by joining two independent optical fibers, which work on the basic principle of coupling between parallel optical waveguides. The fabrication process and the performance parameters of these devices are reviewed



Racks (6U,12U,18U,40U)

Aares has emerged as one of the best premium product distributor and supplier in racking solution & industry with vast variety of products; we are able to cater any demand of market (6U,12U,18U,40U).



ADSS Cable Accessories

ADSS cable fittings are used to fix cables to the poles. Integration tests between fittings and cables are approved according the "NESC heavy" norms. The correct ADSS cable fitting is decided by the cable outer diameter and the span length that needs to be covered.



Pole Clamp

Antennas need proper design integrity and Pole Clamps provide the right solution. The galvanized metal structure provides high resistance to corrosion and ensures a firm grip. The dimensions are perfect to ensure that there is no issue with structural integrity.



Fiber Connector cleaner

Product variations include a variety of solutions that make it easy to use on most fiber connector types, and in any fiber or lens cleaning situation. The cost and performance of these cleaning tools make it an easy choice over competitive solutions.



EPON OLT

Aares OLT is a high density, high capacity, and multi-functional GE-PON FTTH Optical Line Terminal. OLT built on a high capacity Layer 3 switch platform, is an efficient and cost effective solution optimized for service providers to offer reliable TPS services over it.



EPON ONU

Aares ONU providing high-speed high capacity broadband multimedia service of up to 1Gbps. ONU can be applied to FTTB or FTTC based network users enabling high performance switching service economically by using of 1000 Mbps link speed.

EPON ONT

It supports 4 Fast Ethernet (UTP, RJ45) ports, 2 FXS (RJ 11) ports, and Wi-Fi (802.11 b/g/n) interface to the subscriber. It is connected to GE-PON OLT and RN (Re-mote Node) via a fiber optic cable to provide TPS (Triple Play Service).

GPON OLT

It Supports 14 slots that can accommodate 2SCUs, 2PSUs, 2LIUs, and 8PIUs. The LIU slots of OLT can accept 8-port 1G card, 2-port 10G card, or 4-port 10G card up to 2. The PIU slots can accept 8-port 2.5G GPON up to 8.

GPON ONU

GPON ONU can have twenty-four 1000base-T (UTP RJ-45) ports and two optional modules that support either up to two PON ports (GPON or EPON) as well as 1000Base-T or 1000 Base-X /100Base-FX (SFP) ports.

GPON ONT

It supports 4 Gigabit Ethernet (UTP, RJ45) interfaces to the subscriber. It is connected to GPON OLT and RN (Remote Node) via a fiber optic cable to provide TPS (Triple Play Service). Ethernet port auto negotiation or manual configuration.

Plc Splitter

Aares Plc Splitter with and without connector in 1X2, 1X4, 1X8, and 1X16. Splitters are based on the Plasma Chemical Vapor Deposition (P-CVD) technology and its patented fabrication process for providing stable optical character.



Mechanical splice (Bare Fiber)

The mechanical splice is a high performance, low cost, easy to install, fully mechanical fibre optical splice. Employing a visible glass capillary alignment member, that is preloaded with index matching gel, the user can inspect the fibre location during installation.



Media converters (Single/Dual fiber)

The media converter transforms the transmission media of Ethernet signal from CAT5 to Optical fiber. It can extend the transmission distance to several KMs or 10 KMs. Using media converter is a economical solution to achieve long distance transmission base.



Video fiber converter 1 to 16 channel

Video converter supports any high-resolution video signal, Stand-alone type or card-type installed in 19" 2U or 4U rack-mount chassis, automatic compatible PAL, NTSC and SECAM video system, support RS-232, RS-422, and RS-485 data protocols



100/1000base, sfp plus, SM/MM SFP

Aares SFP transceiver is a plug-in module and it is hot-swappable. It allows for seamless integration of fiber with copper LAN connections wherever SFP interface slots are available, such device is economical, it saves time, offers flexibility and eliminates the necessity.



Multiplexer (Bnc, Hdmi)

Aares HDMI Fiber Optic Extender is a transmitter for long haul transmission of HDCP-compliant HDMI video, stereo audio, and RS-232 control signals over fiber optic cabling. Automatic compatible PAL, NTSC, SECAM video system.



Ethernet Switch L2,L3

High-speed auto sensing, full-duplex connections
Increases network capacity to handle extra-large file transfers Plug-and-play functionality for easy installation. Fits easily on a desk or mounts on a wall
Status LEDs: link, speed and activity



Ethernet Wifi Router

Aares wifi modem router is an affordable high-performance ADSL device for home and small office environments. With integrated ADSL2/2+ supporting up to 50 Mbps download speed, firewall protection and Quality of Service (QoS).



Industrial Grade Switches 100/1000Base

Aares Ethernet switch, which supports 6 10/100Base-T(x) + 2 100Base-FX interfaces. The 7 and 8 ports are used to establish SW-Ring for the purpose accomplishing redundancy for Ethernet ring network to enhance the reliability of the network.



Splicing Machine

Fusion splicing is the act of joining two optical fibers end-to-end using heat. The goal is to fuse the two fibers together in such a way that light passing through the fibers is not scattered or reflected back by the splice.



OTDR (JDSU, EXFO, INNO)

OTDR is an optoelectronic instrument used to characterize an optical fiber. An OTDR is the optical equivalent of an electronic time domain reflectometer. The full-feature OTDR often has a greater measurement range than the other types of OTDR-like equipment.



Cable Fault Locator

Aares Cable Fault locator is specially designed for fiber routing and continuity checking in optical networks, finding the breakpoint, poor connections, bending or cracking in fiber optic cables. finding the faults of OTDR dead zone end-to-end visual fiber identification



Power Meter

Power meter used for installing or maintaining any type of fiber networks. There are general-purpose power meters, semi-automated ones, as well as power meters optimized for certain types of networks, such as FTTx or LAN/WAN architectures.



Laser Source

Optical laser sources series is the new generation of small and rugged optical light sources quick, easy and convenient field insertion loss measurement and continuity check. This one button operation provides a quick, simple and error-free testing solution.



Visual Fault Locator

You can diagnose and repair simple fiber link problems VFL. The laser-powered visual fault locator is a cable continuity tester that locates fibers, verifies cable continuity and polarity. This cable continuity tester helps find breaks in cables, connectors and splices



Boom Barrier

Automatic/Manual barriers are universal barriers which can be driven using electro-mechanical, electro-hydraulic or electro-pneumatic drive mechanism. It can be used for a wide range of applications. Traffic management, parking lots, industrial sites or to limit the trespassing.



Spike Barrier

The automatic and manual spike barrier is accurate in performance and serves varied application requirements with absolute efficiency. The presence of rising steel spikes can easily damage the rims and tyres of any kind of vehicles.



CCTV Surveillance

Our range of Closed Circuit Television (Indoor camera , outdoor camera, ipcamera,dvr,nvr) has led the industry to new frontiers of design and performance. we pride in bringing the latest technology being introduced anywhere in the world to its valued clients.



Access Control System

It includes several controllers and Wieg and output readers. These devices employ various combinations of 125KHz approx or 13.56MHz contactless (MiFare) smart card credentialing, keypad personal identification numbers (PINs), and/or fingerprint biometrics.



Mobile Booster/Jammer

Mobile Booster/Jammers have both benign and malicious uses. Police and the military often use them to increase/disrupt communications during situation. This device used for Boosting/Jamming the cell phone network to the local area.



Solar System

There is simply no better alternative for an environmentally-friendly power supply in the future than to take the path leading to a solar energy era. Daily the sun provides the earth with more than ten thousand times the energy required by people around the world.



AARES TELECOM (P) LTD

C-18, Gali No. 4,
Near Shashi Garden Shiv Mandir,
Acharya Niketan Mayur Vihar
Phase-1, DELHI 110091(INDIA)

Call: +91-11-12345678
sales@aares telecom.in
www.aares telecomindia.com